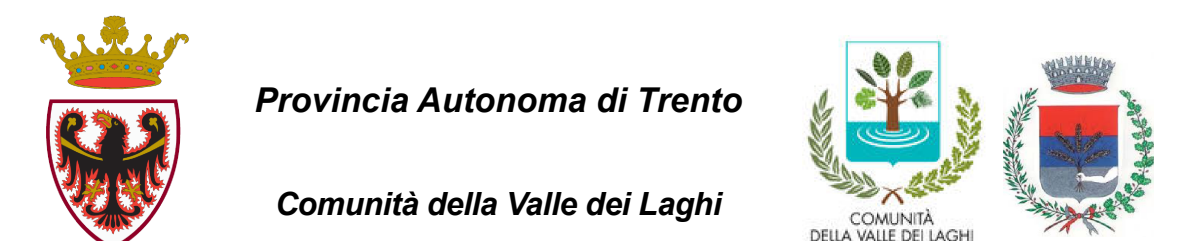
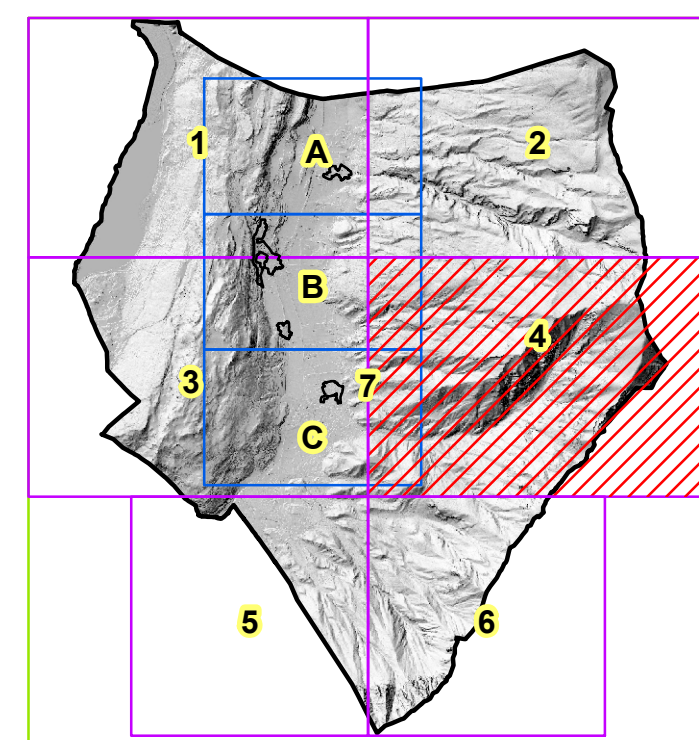


# PIANO REGOLATORE GENERALE

**VARIANTE 6/2019**

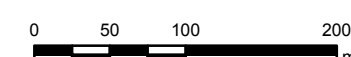


**Comune Di Cavedine**  
Via XXV Aprile, 26, 38073 Cavedine TN



**SISTEMA INSEDIATIVO  
PRODUTTIVO INFRASTRUTTURALE**

**1: 5.000**



**Il progettista:**



**Collaboratore:**  
Elaborazione grafica: Geopartner srl - Trento

**4**